

NIE Energy Generation Tariff Guide



This guide provides an overview of NIE Energy's arrangements for renewable and CHP generators such as wind turbines, hydro stations and photovoltaics (PV) up to 1MW (1000kW) and CHP up to 500kW.

Contents

1. Who is NIE Energy?
2. What is the NIE Energy Generation Tariff?
3. How do I apply for the NIE Energy Generation Tariff?

Export

4. What is export?
5. What happens to the electricity which is generated and exported?

Metering arrangements for Export

6. What is an import / export meter?
7. Why do I need to get an import / export meter installed?
8. How much does it cost to get an import / export meter fitted?
9. How long does it take for an import / export meter to be fitted?
10. How do I read my import / export meter?

Payment for export

11. When do I receive payment for export?

ROCs (Generation)

12. What is a NIROC?
13. Is my generator eligible for ROCs?
14. Who is Ofgem?
15. Do I have to deal with Ofgem?
16. Why should I appoint NIE Energy as my agent?

Metering arrangements for ROCs

17. What is a generation meter?
18. Why do I need a generation meter to be installed?

Payment for ROCs (Generation)

19. When do I receive payment for ROCs?

Other issues

20. How does NIE Energy set the price for export and ROCs?
21. What if I also have a heat pump installed?
22. Who should I contact if I have a question?





1. Who is NIE Energy?

NIE Energy supplies electricity to around 780,000 homes and businesses in Northern Ireland and aims to provide customers with value for money and the highest standards of customer service.

2. What is the NIE Energy Generation tariff?

NIE Energy is keen to encourage the installation of renewable energy and Combined Heat and Power (CHP) in Northern Ireland and our tariff aims to help realise the value of the electricity generated by these sources. We offer rewards for both Northern Ireland Renewable Obligation Certificates (NIROCs) (if applicable) and for electricity that is generated but isn't used on the premises (export).

3. How do I apply for the NIE Energy Generation Tariff?

Visit www.nie-yourenergy.co.uk and click on the link for the **NIE Energy Generation Tariff**. This will provide you with further information on the tariff including current tariffs offered and the appropriate application forms.

.....

Export

4. What is export?

Export is electricity which is generated but is not used on your premises. This is also sometimes referred to as 'spill' or 'surplus' electricity.

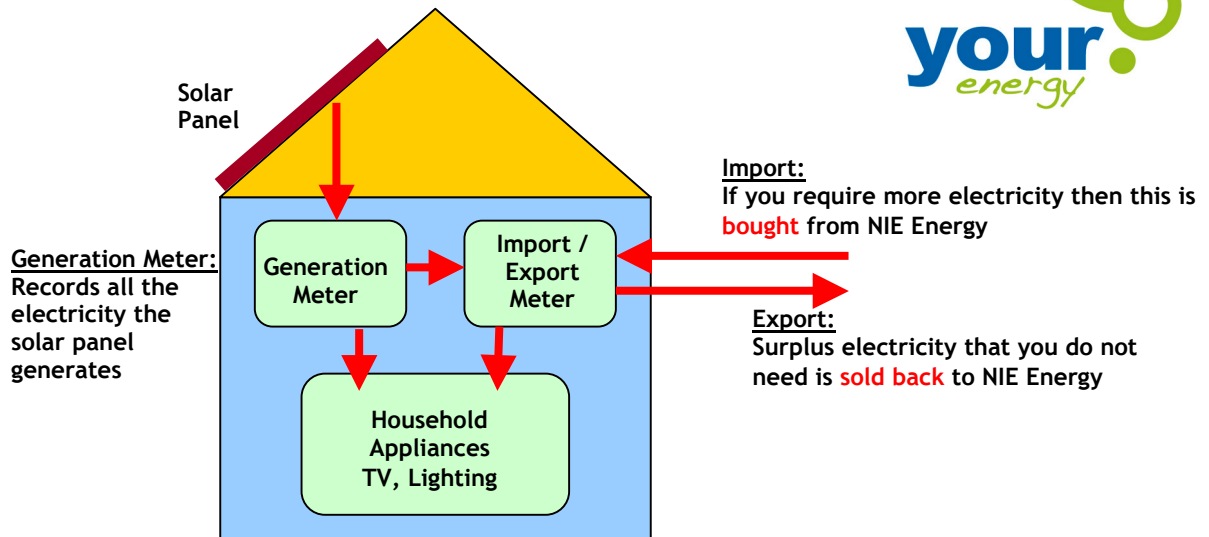
5. What happens to the electricity which is generated and exported?

You will be able to see the total amount of electricity generated by your renewable generation from reading the generation meter (your installer should have provided this meter).

This energy is either used on your premises or may be exported back to the grid if it is surplus to your needs at the time of generation. You will save most money if you use the electricity that is generated in your home or business.

It is likely that you will require more electricity than your renewable technology can generate. Electricity is then imported from the grid and you will receive a bill from your supplier for imported electricity in the normal way. The diagram below explains this:





Metering Arrangements for Export

6. What is an import /export meter?

An import / export meter measures:

- i. the amount of surplus electricity that the renewable technology sends back to the grid that isn't used on the premises.
- ii. the amount of electricity that is imported from the grid, which is billed in the normal way from your supplier.

7. Why do I need to get an import / export meter installed?

An import / export meter is installed so that we can measure the amount of surplus electricity that is exported back to the grid.

Without an import / export meter you will not be able to receive payment for the exported electricity and will not be making the most of the renewable installation.

NIE installs the meter on behalf of NIE Energy. The import /export meter is in addition to the generation meter.

8. How much does it cost to get an import / export meter fitted?

This depends on the type of supply and the size of renewable generator.

- A single-phase meter for customers on a Home Energy tariff will be installed **free of charge**.
- A two rate tariff meter e.g. Economy 7 will cost **£50.00 +VAT (£58.75)**
- A three phase supply meter will cost **£66.00 + VAT (£77.55)**

This is a one-off cost and the price includes the installation of the meter.

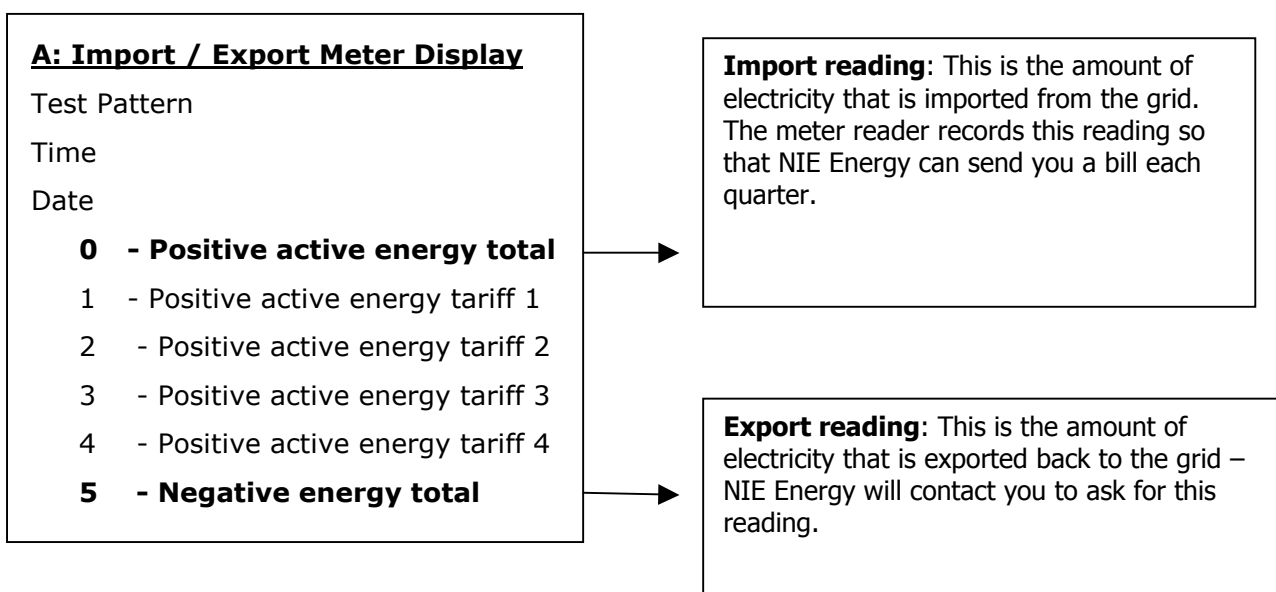
9. How long does it take for an import / export meter to be fitted?

Once we receive your tariff application form and payment for the meter (if applicable), we will send your request to the NIE Metering department. They will then contact you to arrange a suitable date and time for the meter installation.

10. How do I read my import / export meter?

There are a wide range of import / export meters and they vary in how they display the export reading.

Most import / export meters have a button which you can use to scroll through the different readings. To get the export reading, use the button to scroll through the menu as outlined below:



B: In some cases the import / export meter will display just two readings:

Import – which will have a small '0' prefixing the reading.

Export – which will have a small '1' prefixing the reading.

Payment for export

11. When do I receive payment for export?

Depending on the size of the renewable technology installed, export payments are made at different times of the year. **The payments will not appear on, or be deducted from, your electricity bill** - you will continue to receive a quarterly bill from your supplier for electricity that you import from the grid.

- *If the renewable generator is under 10kW:* you will be paid for export on an **annual basis**. We will contact you for a reading and make the appropriate payment soon afterwards.
- *If the renewable generator is 10kW - 75kW:* you can opt to be paid on a **quarterly or annual** basis for export.
- *If the renewable generator is over 75kW:* you will be paid on a **monthly** basis.

NIE Energy will contact you in advance to request your meter reading and payment will be based on the export reading that you provide (If your meter is a half hour online meter, NIE Energy will automatically receive these meter readings) – it will be paid directly into your bank account by bank transfer.

ROCs (Generation)

12. What is a NIROC?

A NIROC or ROC is a Northern Ireland Renewable Obligation Certificate. This is a 'green' certificate which is issued to an Ofgem accredited generator for eligible renewable electricity generation.





13. Is my generator eligible for ROCs?

If electricity is generated from wind, PV, hydro or biomass and the installation is located within Northern Ireland, you are eligible to apply for ROCs. CHP generators do not qualify for ROCs.

14. Who is Ofgem?

Ofgem is the body responsible for administering the process of accrediting and issuing NIROCs.

15. Do I have to deal with Ofgem?

If your generator is over 50kW, Ofgem insist that you deal with them directly. Providing your generator is under 50kW, you can appoint NIE Energy to act as an Agent on your behalf and we can look after the Ofgem process of applying for ROCs and submitting annual meter readings.

16. Why should I appoint NIE Energy as my agent?

Appointing NIE Energy to act as an Agent on your behalf means that we can:

- a. Assist with your Ofgem application.
- b. Deal with any queries from Ofgem relating to your application.
- c. Act in an administrative capacity.
- d. Pay you based on each kWh of generation.

This should make the process more straightforward for you. There is no charge for appointing us to act as your Agent.

Please note we are unable to act as an Agent if your generating station is over 50kW

.....

Metering Arrangements for ROCs

17. What is a generation meter?

A generation meter should be fitted by your installer. It measures all electricity that the renewable generator generates - this is the meter that Renewable Obligation Certificates (ROCs) are based on.

18. Why do I need a generation meter to be installed?

A generation meter is required if you wish to claim ROCs. To claim ROCs the generation meter must be an approved Ofgem meter. Your installer should be aware of this but a link to a list of approved generation meters can be found on our website www.nie-yourenergy.co.uk/micro.php

.....





Payment for ROCs (Generation)

19. When do I receive payment for ROCs?

ROC payments are generally made on an annual basis in July when Ofgem issue ROCs for the year. NIE Energy will contact you at the end of March each year to request a reading from the generation meter. Payment will be based on the number of ROCs Ofgem issue based on your meter reading.

If the generator is over 50kW, you will have to submit monthly generation meter readings to Ofgem. NIE Energy will pay you for these ROCs when they are transferred to our ROC account (usually monthly).

Other issues

20. How does NIE Energy set the price for export and ROCs?

NIE Energy sets its export rates on an annual basis - we undertake to hold these rates, whether electricity prices increase or decrease. These rates are agreed with the Utility Regulator (NIAUR) each year and the rates will be reviewed annually and implemented on 1st October. The NIE Your Energy website (www.nie-yourenergy.co.uk) will keep you up to date with the latest tariff rates.

21. What if I also have a heat pump installed?

If you have a heat pump installed you need to make sure that the supply to your property is sufficient for the size of the heat pump by checking the supply with NIE. This should be done as early as possible in the installation process by completing the Heat Pump application form from NIE or by making it clear on your connection card. This can be found on the NIE website or by using this link:

http://www.niegetconnected.co.uk/downloads/gshp_application.pdf





22. Who should I contact if I have a question?

If you have a query regarding:

- *Your application for the NIE Energy generation tariff, an import / export meter or ROCs:* call NIE Energy on 028 90685010.
- *Grid Connection:* Your installer will be able to advise you on grid connection but if you would like to discuss it with NIE, call 08457 643 643 or log on to www.nie.co.uk/customerinformation/index.htm for more information. NIE Energy cannot provide information on grid connection.
- *Your electricity bill:* call NIE Energy on 08457 455 455.
- For any other queries relating to the installation of your renewable energy system please contact your installer.

